

Segmentation and Time-of-Day Patterns in Foreign Exchange Markets*

Angelo Ranaldo[†]
Swiss National Bank

February 28, 2007

*The views expressed herein are those of the author and not necessarily those of the Swiss National Bank, which does not accept any responsibility for the contents and opinions expressed in this paper. The author thanks Tim Bollerslev, Alain Chaboud, Thierry Foucault, Albert Menkveld, Marco Pagano, Paolo Pasquariello, Dagfinn Rime, Asani Sarkar, Paul Söderlind, David Veredas, Paolo Vitale, Katrin Assenmacher and an anonymous referee for their comments. I am especially grateful to Adrian Trapletti for his insightful suggestions and support. All errors remain mine.

[†]Angelo Ranaldo, Swiss National Bank, Research, Börsenstrasse 15, P.O. Box 2800, Zurich, Switzerland. E-mail: angelo.ranaldo@snb.ch, Phone: ++41.44.6313826, Fax: ++41.44.6313901.

Segmentation and Time-of-Day Patterns in Foreign Exchange Markets

Abstract: This paper sheds light on a puzzling pattern in foreign exchange markets: Domestic currencies appreciate (depreciate) systematically during foreign (domestic) working hours. These time-of-day patterns are statistically and economically highly significant. They pervasively persist across many years, even after accounting for calendar effects. This phenomenon is difficult to reconcile with the random walk and market efficiency hypothesis. Microstructural and behavioural explanations suggest that the main *raison d'être* is a domestic-currency bias coupled with market segmentation. The prevalence of domestic (foreign) traders demanding the counterpart currency during domestic (foreign) working hours implies a cyclical net positive (negative) imbalance in dealers' inventory. In aggregate, this turns into sell-price (buy-price) pressure on the domestic currency during domestic (foreign) working hours.

Keywords: foreign exchange market; microstructure; behavioural finance; time-of-day patterns; market segmentation; calendar effects; inventory; asymmetric information; high-frequency data.

JEL Classifications: F31; G10; G14; G15.

1 Introduction

This paper provides striking evidence on spot exchange rates: Home currencies depreciate systematically during domestic working hours and appreciate during the working hours of the foreign counterpart country. Our database covers more than a decade's worth of data stored in a high-frequency database, with several currency pairs that, taken together, cover more than 64% of total market turnover by currency pair in 2004 (BIS (2005)). A clear picture emerges: first, this pervasive time-of-day pattern is highly significant, both statistically and economically; second, it spans many years and overrides calendar effects.

The fact that exchange rates follow cyclical patterns during the day challenges the random walk and efficient market hypothesis. An efficient market is one where the market price is an unbiased estimate of the true asset value. Deviations between true and market prices should be random, not systematic and cyclical. Given its characteristics, the foreign exchange market is the foremost aspirant to market efficiency. It is the world's largest financial market¹, with low transaction costs, and is widely backed by derivative instruments. It is a real global market open 24 hours a day. In it, various atomistic and price-taking market participants trade identical assets virtually, from many locations, and they can react almost instantaneously to news items. Operationally, trades are triggered on several competing microstructures and exchange systems, such as through dealers, brokers, ECNs, phone networks and nonbank internet sites.² Why do so many rational and utility-maximising traders initiating the purchase of domestic (foreign) currency during domestic (foreign) working hours systematically incur recurrent adverse transaction prices? Why do they not arbitrage this market anomaly in such a competitive environment?

After having documented the statistical and economic significance of this phenomenon, we attempt to explain why it exists. Two main explanations emerge: liquidity and asymmetric information effects. The former refers to imbalances in the inventories of liquidity suppliers that are caused by systematic excess demand or supply at specific intraday times. The latter refers to the possibility that traders may profit from superior information because of their networking, trading location and the time zone in which they operate. We argue that the former factor is more important. In particular, this main explanation is derived from a combination of two factors: first, the prevalence of domestic currencies in the portfolio allocations of domestic investors and second, mar-

¹The average daily turnover on the foreign exchange market amounted to \$1.9 trillion in April 2001 (BIS, 2005), more than 5 times the yearly turnover of all equities traded at NYSE.

²E.g. Deal4Free of CMC established in 1996; IFX Markets (since 1999); MatchbookFX (started in 1999 and closed down in 2000); HotSpotFX (since 2001) and Oanda (since 2001).

ket segmentation. With respect to these two factors, we will henceforth refer to 'domestic-currency bias' and 'domestic-time bias'. The domestic-currency bias means that traders located in one specific country tend to hold assets denominated in the reference currency of that country. Their portfolios typically include domestic assets and, therefore, the domestic currency prevails over foreign currencies. This idea parallels the international home-bias literature (see Lewis (1999) for a survey). The domestic-time bias refers to the actual time when trading is done. Evidence on the imperfect integration of foreign exchange markets is provided by Hsieh and Kleidon (1996). As in the case of the proximity bias for equity markets (e.g. Massa and Simonov (2006)), we argue that investors have a tendency to trade mainly in their country's working hours. For instance, US investors, brokers and dealers will tend to exchange US dollars against euros during the main US hours of work. Conversely, the execution of euro-dollar spot exchanges initiated by European investors is clustered within the main working hours of central Europe. In a trading environment with an imperfectly elastic supply, the combination of these two factors gives rise to a cyclical pattern: the home currency depreciates during domestic working hours and appreciates during foreign working hours. In aggregate, the geographic segmentation, coupled with the domestic-currency bias, creates sell-price (buy-price) pressure on the domestic currency during domestic (counterpart) working hours.

In order to obtain empirical support for these arguments, we use two methods to examine currency movements. First, we perform a time-series analysis of intraday currency returns to examine linkages across time and world regions. The prevalence of reversal rather than persistent patterns in currency returns suggests that the liquidity hypothesis is more plausible. Second, a natural experiment is to test what happens when one of the two counterpart countries or regions is on holiday. If the foreign country is on holiday while people in the home country are working, it seems likely that during domestic working hours the domestic sell-pressure on the domestic currency will be exacerbated by the diminished buy-pressure from foreign investors. On the other hand, during foreign working hours, foreign investors will be relatively inactive and will not exert the usual buy-pressure on the domestic currency. This will result in stronger depreciation of the home currency during domestic working hours and weaker appreciation during foreign working hours. Our empirical findings largely support this supposition.

Surprisingly, the literature to date has almost nothing to say about the intraday patterns of exchange rate returns. Most of the attention in previous

studies has been devoted to intraday volatility or bid-ask spreads, rather than returns. The Olsen & Associates study was a real pioneer in collecting and analysing high-frequency data (e.g. Dacorogna et al. (1993), Olsen et al. (1997), and Müller et al. (1990)). However, its focus was on return volatility, bid-ask spread size and intensity of market activity, especially for foreign exchange markets. This is also the case for many other studies that have made significant contributions to the literature (Andersen and Bollerslev (1997, 1998), Baillie and Bollerslev (1990), Bollerslev and Domowitz (1993), Hsieh and Kleidon (1996), and Ito and Hashimoto (2005), just to mention a few). Ito (1987) and Ito and Roley (1987, 1991) represent an exception. However, they use only five points of time to analyse the intraday return behaviour of yen-dollar exchange rate from 1980 to 1986. Our study adds to this literature by examining in finer detail the cross-sectional and time-series characteristics of intraday returns across different time zones, working time periods and calendar events.

This paper is structured as follows. Section 1 provides statistical evidence on time-of-day market patterns. Section 2 covers their economic significance. Section 3 presents a simple microstructure framework for studying the main drivers of this phenomenon. Section 4 presents some empirical findings supporting our hypotheses. Section 5 concludes the paper.

2 Time-of-day patterns

2.1 Data

The database has been kindly provided by Swiss-Systematic Asset Management SA, Zurich. It includes spot exchange rates for the following currency pairs: CHF/USD, DEM/USD, EUR/USD, GBP/USD, JPY/EUR and JPY/USD. The sample periods cover the period from the beginning of January 1993 to the end of August 2005 for the CHF/USD, GBP/USD and JPY/USD exchange rates, and from January 1999 to August 2005 for EUR/USD and JPY/EUR. Data for DEM/USD cover the period from January 1993 to December 1998. The introduction of the euro dictates the time periods for the euro and the German mark. We use the tick-by-tick FAFX Reuters midquote price (the average price between the representative ask and bid quotes). The characteristics of these data have been discussed at length in previous studies (among others, Müller et al. (1990), Dacorogna et al. (1993) and Goodhart, Ito and Payne (1996)). Although indicative quotes have their shortcomings, a comparison of the electronic foreign exchange trading system, Reuters 2000-2, with FAFX Reuters shows that "FAFX indicative quotes can be taken as a very good and close

proxy for that in the Reuters 2000-2" (Goodhart, Ito and Payne (1996), page 126).³

The dataset contains millions of representative quotes. To conduct this study, we carefully organised our database as follows: first, we accounted for changes in daylight savings times, expressing time in terms of Greenwich Mean Time (GMT). Second, we organised our database in 5-minute intervals. For each interval, we identified the first, last, high and low exchange rates. If no trades occurred in a given 5-minute interval, we copied down the last trading price in the previous time interval. Finally, since our database included weekends, we excluded weekend hours according to the definitions reported in Table 1. The definition of weekend hours matches the beginning and end of working hours in the different time zones. Thus, for each currency pair, the working week begins at 6 a.m. in the earliest time zone and ends at 6 p.m. in the latest time zone, expressed in terms of Greenwich Mean Time. For instance, for JPY/USD, the working week begins when it is 6 a.m. on Monday in Tokyo (corresponding to 9 p.m. on Sunday, GMT) and ends at 6 p.m. on Friday in New York local time (11 p.m. on Friday, GMT). It is worth stressing that the inclusion of weekends leaves the main results unchanged. But it has the disadvantage of blurring some of the intraday effects.

For the sake of presentation, we investigate exchange rate movements over 4-hour periods. These time brackets allow us to observe overlapping and non-overlapping intraday periods in the different working hours of each world region. In particular, trading hours from midnight to 4 a.m., from 8 a.m. to midday and from 4 – 8 p.m. GMT mirror the main trading activity in Japan, Europe and the US, respectively. A 4-hour time interval is also a reasonable length of time for marketable intraday trading. In principle, one could question whether shorter timeframes than four hours provide a finer identification of short-lived patterns. But it turns out that shorter timeframes deliver a noisier picture of the same phenomenon. The descriptive analysis over one-hour time intervals is available upon request.

2.2 Statistical significance

Figure 1 presents time-of-day return patterns in graphical form. Each graph shows 24 cross-sectional averages of annualised returns over four hours. Using

³Martens and Kofman (1998) show that futures on DM/\$ tend to lead the "quoted" spot market for up to 3 minutes. This lead-lag relation does not constitute critical evidence for our study. Lyons (1995) stresses three limitations related to "indicative" quotes: they are not tradable; they are representative only for the interbank market; during very fast markets, "indicative" quotes may be updated with a short delay.

two-sample t-tests, these graphs also show if the acceptance of the null hypothesis of equality in means falls below the p-value of 5% or 1%. In figure 1, black (grey) bars mean that an average return over a specific 4-hour time period is different at a 1% (5%) significance level.⁴ These figures clearly show that all currencies tend to depreciate during the working hours of their reference countries and to appreciate during the working hours of their counterpart countries. More specifically, these figures show:

- CHF/USD: the US dollar appreciates significantly from 5:00 to 13:00 GMT and the Swiss franc appreciates significantly from midday to 17:00 and then again from 17:00 to 23:00 GMT.
- DEM/USD: similar to CHF/USD, the US dollar appreciates significantly from 5:00 to 13:00 GMT and the German mark appreciates significantly from midday to 17:00 GMT.
- EUR/USD: the US dollar appreciates significantly from 8:00 to 12:00 GMT and the euro appreciates significantly from 16:00 to 22:00 GMT.
- GBP/USD: the US dollar appreciates significantly from 4:00 to 12:00 GMT and the pound sterling appreciates significantly from 11:00 to 18:00 GMT.
- JPY/EUR: the euro appreciates significantly from 1:00 to 6:00 GMT and the yen appreciates significantly from 8:00 to 15:00 GMT.
- JPY/USD: the US dollar appreciates significantly during the night (from 22:00 to 4:00 GMT) and the yen appreciates significantly from 12:00 to 16:00 GMT.

The trading influence from world regions other than the two counterparties is weaker, but still visible. In particular, trading in Japanese trading hours appears to support the US dollar against the euro and against the sterling (see figure 1C and 1D, during the night from 21:00 to 2:00 GMT), US trading supports the euro against the yen (figure 1E, 14:00-22:00 GMT) and during European hours the dollar depreciates against the yen (figure 1F, 5:00-11:00 GMT).

The dollar depreciation (appreciation) against the yen during US (Japanese) business hours is the weakest pattern we have found (although it is still significant). Our results apparently contrast with those obtained by Ito and Roley

⁴These t-statistics refer to two-tail statistics on the difference between a given 4-hour return mean over all the other 4-hour returns. Note that we perform the two-sample equal variance (homoscedastic) test. This represents a more severe test than the heteroscedastic hypothesis. In fact, the probability associated with a Student's t-test for equality in means has an upward bias and leads to a more likely rejection of the inequality hypothesis.

(1987), who found opposing patterns from 1980 to 1986. There are several explanations for this apparent anomaly. First, having only five data points in time, Ito and Roley use a more rigid and rough definition of intraday periods. Second, as pointed out by Ito and Roley (1987), the yen-dollar exchange rates from 1980 to 1986 are characterised by the "over-valued" dollar policy and strong temporary trends. Froot (1991) also shows that Japanese outflows of foreign direct investment increased dramatically in the eighties, and half of the Japanese capital outflow was directed towards US.

Table 2 and 3 show more detailed descriptive statistics. Here, six non-overlapping 4-hour time intervals represent the entire trading day. Means, medians and standard deviations are reported on an annualised basis to ease reading. To annualise, 4-hour returns are multiplied by 260. Tests for inequality in means and medians (Wilcoxon/Mann-Whitney test) corroborate the previous results. In line with the previous literature, intraday heteroskedasticity is clearly observable (F-tests show statistical significance). The max and min and the statistics on the third and fourth moments suggest that distributions are reasonably centred, acceptably well-shaped with respect to a Gaussian distribution and moderately affected by outliers.⁵ Among the descriptive statistics, we report the relative frequency of positive returns (excluding zero returns). The sign test shows that the proportion of upward and downward intraday returns significantly matches with the time-of-day patterns plotted in Figure 1A-F, i.e. there are consistently more domestic currency depreciations (appreciations) during domestic (foreign) working hours. It is also interesting to note that 4-hour returns outside the main working hours are not serially correlated across consecutive days.⁶ For instance, for CHF/USD there is an autoregressive pattern during Swiss and US working hours only. This is another indication that clock-time influences trading-time.

There are some institutional aspects that can represent a preliminary explanation for the time-of-day patterns. First, it is worth noting that there is a specific point in time that can be considered to be the end of the trading day

⁵We checked the correspondence between our intraday outliers, using Datastream daily data. There is consistent matching. In particular, the max and min 4-hour returns for JPY/USD are concentrated around 8 October 1998. On that day, this exchange rate experienced marked fluctuations. The dollar depreciated strongly around 10:00-12:00 GMT and recovered around 15:00-18:00 GMT. Datastream data indicate that the daily (log) changes on 7 and 9 October 1998 amounted to -7.7% and -2.3%, respectively. (The original source of these data is the Global Treasury Information Services, which fix the closing quote at 13:00 GMT).

⁶See "Q-stat 1" in table 2, showing the Q-statistic for testing the null hypothesis that there is no autocorrelation at lag 1, i.e. serial correlation between one day's intraday return occurring in a given 4-hour period and the previous day's intraday return occurring at the same time of the day.

on spot foreign exchange markets. This is 21:00 GMT, the time when the New York market closes. An open spot position after 21:00 GMT implies the payment of an interest rate differential between the long currency and the short currency over the next working day. Our results show that this point in time has no particular effect on intraday returns. Only in the case of euro-dollar exchange rates we do observe significant movement. Second, as discussed by Lyons (1995), many banks impose overnight limits on their dealers' positions. Moreover, most dealers close their day with a zero net position and then they restore their inventory in the early morning of the trading day to face the oncoming liquidity demand (Lyons (1998)). Thus, intraday and overnight trading limits may determine time-of-day patterns. Finally, the common practice in foreign exchange markets is to hedge only partially the aggregate dealer's position. On the other hand, dealers tend to adjust unbalanced inventory levels on a single currency pair over (short) intraday periods. Lyons (1995) shows that FX dealers prefer to reduce inventory over given thresholds via outgoing orders or brokered trades. This practice implies a transmission mechanism of transient inventory imbalances among dealers. Overall, this reasoning provides us a *prima facie* explanation for temporary trends in exchange rates due to inventory problems.

2.3 Calendar effects

We examine how intraday returns are distributed across time and whether our results may be affected by particular calendar effects. In particular, we check whether these intraday seasonalities cluster at given points of time. There is no specific month in the year responsible for this phenomenon (not displayed). Hence, the year-change or January effect that characterises equity markets does not appear to hold for currencies. Figure 2 shows that the time-of-day anomaly is evenly distributed across the years. By taking the US investor (European investor for JPY/EUR) point of view, figure 2A plots domestic currency appreciation during foreign working hours, year by year, from 1993 to 2005. Figure 2B shows domestic currency depreciation during domestic working hours. Only in a very few cases do we observe exceptions to the general pattern; in particular, the US dollar appreciated noticeably against the Swiss franc during US working hours in 1999 and 2005. However, it is evident that the time-of-day phenomenon persists over years.

Table 4 reports how the time-of-day patterns are spread across weekdays. For simplicity, we annualise returns. Some interesting results emerge. As far as the US dollar is concerned, the time-of-day anomaly exerts the strongest effect during US working time on Thursdays. In general, the US dollar depreciates

5%–7% against European currencies during US working hours, and 4% against the yen. On Thursdays, the dollar experiences an additional depreciation of 2%–4%. European currencies, including the Swiss currency, appear more affected by trading activity on Mondays and Wednesdays. Indeed, the euro, German mark and Swiss franc have a tendency to loose 3% or more than the usual morning depreciation on Mondays (8:00-12:00 GMT). The additional appreciation of the euro during this intraday period increases from 7.8% to 15.7% against the yen. In turn, the yen seems to be more exposed to an end-of-the-week effect. On Friday morning (local time), the yen loses 13.6% on average against the dollar and 10.5% on average against the euro, as compared to the normal 2.7% and 2.9%, respectively. There are two main arguments that could help to explain these deterministic patterns. On the one hand, the non-trading hours over the weekend may strengthen time-of-day effects on Mondays and Fridays. The weekend effect on equity markets has been extensively documented (e.g. French (1980)). A similar effect may exist on currency markets. On the other hand, the literature shows that major public information announcements, such as macroeconomic news, have a significant effect on foreign exchange rates (cf. among others, Andersen et al. (2003), Andersen and Bollerslev (1998), Bauwens, Ben Omrane and Giot (2005), Ederington and Lee (1993), Evans and Lyons (2005)). Since these news announcements are pre-scheduled and released recurrently on the same day of the week, the day-of-the-week effect discussed above may be related to information releases. Finally, an additional issue that may influence intraday price movements is the occurrence of central bank interventions. However, these are typically conducted on an irregular and occasional basis. Moreover, the literature shows that intervention operations are controversial policy options and may lead to mixed results (e.g. Dominguez (1998)). So, it is hard to believe that deterministic patterns such those in table 4 can be explained by irregular events such as central bank interventions.

3 Economic significance

While this time-of-day phenomenon appears highly significant in statistical terms, a further natural question would be whether it is also significant in economic terms. We attempt to answer this question by applying some simple trading rules. Five main rules are investigated. Their performance is summarised in Table 5. The first (second) rule consists in taking a long (short) position each working day for four of the foreign (domestic) working hours. The long position on US dollars is from 8:00 to noon if the counterpart currency

is the Swiss franc, German mark, euro or pound sterling, and from midnight to 4:00 as far as the yen is concerned. The short position on the dollar spans the hours from midday to 16:00 if the counterpart currency is the Swiss franc, German mark, pound sterling or Japanese yen, and from 16:00 to 20:00 for the euro. The short position on euro against yen occurs from 8:00 to noon. The third strategy combines the first two rules, i.e. a long-short strategy each day. Since we have observed some day-of-the-week effects, the fourth and fifth strategies focus only on one specific trading day in the week. The fourth trading rule implements a short-long strategy on Mondays only. This should have a particularly positive effect on performance during European working times. The final trading rule executes a short-long strategy on Thursdays or Fridays only. These specific days are consistent with the day-of-the-week effects reported in Table 4. Taking annualised values, performance is evaluated in terms of mean return, standard deviation and Sharpe ratio. We also implement a simple time-series analysis by estimating a one-factor model as follows:

$$r_t^S = \alpha + \beta r_t^D + \epsilon_t \quad (1)$$

The dependent variable r_t^S is the intraday return on day t resulting from the strategy S that could be one of the five trading rules explained above. The return on the benchmark asset r_t^D is represented by the daily (log) change on the currency pair. The day is defined as lasting from 0:00 to 24:00 GMT. Other definitions provide essentially the same results. In the LS regressions, we apply the heteroskedasticity consistent covariance matrix estimator as proposed in White (1980). The factor model estimation gives the size of alpha (annualised) and beta that can be interpreted in the traditional sense, namely the risk-adjusted Jensen measure and the beta coefficient as a measure of systematic risk.

It is worth emphasising that the implementation of these rules does not aim at maximising profitability. In fact, to be consistent with the rest of the paper, these rules are applied to the six four-hour periods mentioned above and not to the intraday periods affording the maximum average returns. For instance, the long position on Japanese yen taken by a European investor trading on JPY/EUR has been set for the midnight–4:00 time intervals (GMT) that provide a return of only 2.8%. This position would earn 7.6% if carried out from 17:00–22:00. Furthermore, more sophisticated operations such as the use of leverage or (intraday) timing are simply ignored.

Table 5 shows that even the minimal long and short rules provide significant results in economic terms. The combined long and short strategy in-

creases performance twofold. Long-short strategy performance ranges from 5.9% (GBP/USD) to 16.7% (EUR/USD). These numbers translate into 0.9 and 2.41 in terms of Sharpe ratios. The implementation of day-of-the-week strategies magnifies these yields further. The long-short strategy on Mondays and Thursdays attains almost 20% of annual returns, with a Sharpe ratio of more than 3.5.

The factor model estimation for equation (1) yields the following results. First, alphas are exactly in line with the mean returns reported above. Second, beta estimates suggest a fairly low exposure to systematic risk. Betas (in absolute values) for long and short trading rules (taken separately) are around 0.2–0.3. These values decrease when long and short strategies are combined. Betas for weekday strategies are slightly higher than the pure long-short rule which essentially involves a negligible systematic risk and a solely positive alpha.

The consideration of transaction costs significantly worsens some of the strategy performances above. We calculate the break-even cost for each currency strategy. This means that we estimate the implicit maximum cost necessary to avoid incurring losses. To do this, we charge the largest quoted bid-ask spreads⁷ or the round-trip cost, each time a long or short strategy is adopted, and twice the round-trip cost for the long-short strategies. The first three trading rules involve a great deal of trading because they imply that a transaction is carried out each working day. For this reason revenues are significantly reduced by transaction costs in these cases. However, it appears that the EUR/USD pair, at least, provides lucrative speculation, even after adjusting for transaction costs. In these cases, time-of-day currency strategies can bear transaction costs as high as 4 pips⁸ before moving into a negative range. This magnitude of spread is large when compared with the typical interdealer bid-ask spreads documented in the previous literature.⁹

To complement this analysis, Table 5 also shows the average representative bid-ask spreads encountered in our data. We took into consideration the average bid-ask spread size surrounding the beginning and end time of the intraday holding periods (e.g. nearby 8 a.m. and noon for the 8:00-12:00 long strategy). It is

⁷It is worth noting that intraday cost-of-carry is virtually zero in spot currency markets. Provided with cash holdings to invest, a spot trading position opened after 21:00 GMT of the previous day and closed before 21:00 GMT of the current day pays no interest rates.

⁸One pip for currency pairs involving the Japanese yen corresponds to 0.01. One pip is the fourth decimal for the other currencies, i.e. 0.0001.

⁹Here, we mention only few studies reporting indications about the spread size. Ito and Hashimoto (2005) report an average spread size between 0.015 and 0.025 for JPY/USD and 0.0001 and 0.0002 for EUR/USD in the EBS system during 1999-2001. According to Lyons (2001), the median spread for DEM/USD was already low in 1992, i.e. around 3 pips. Goodhart et al. (2002) find that the average spread in both DEM/USD and USD/EUR was between 2 and 3 pips using data from 1997 to 1999.

worth noting that average spreads from the Reuters representative quotes are larger than interdealer spreads and tend to overestimate transaction costs. Table 5 shows that the payoff increases significantly if we consider day-of-the-week strategies. In fact, these strategies are much less costly and more remunerative. In most cases, break-even costs are between 10 and 19 pips. These numbers appear profitable even when compared with the representative bid-ask spreads.

4 Possible explanations

In this section, we analyse two possible explanations for the time-of-day patterns documented above, which are liquidity and information asymmetry problems. The Grossman-Miller (1988) model represents an intuitive framework for the former hypothesis. In their model, liquidity events lead to temporary order imbalances and a desynchronised demand for market liquidity. Market makers smooth this temporary imbalance by providing liquidity to those traders demanding for immediacy and then offsetting their positions with more patient agents. In the spirit of Grossman-Miller (1988), the combination of 'domestic-currency bias' and 'domestic-time-bias' represents a recurrent 'liquidity event' that produces a net demand of foreign currency during the main domestic working hours. From the liquidity suppliers' standpoint, the predominance of domestic traders purchasing foreign currency represents a positive inventory imbalance on domestic currency that bears a risk of an adverse price move. Therefore, the immediate demand of foreign currency turns into a higher price for eager buyers of foreign currency.

To explain the second hypothesis, we need a framework that encompasses information asymmetry. We closely follow the Biais, Glosten and Spatt (2005) model, since this represents a unified theoretical framework that includes non-competitive pricing, order-handling, inventory and adverse selection costs.¹⁰ The notation below conforms the original paper. The trading mechanism is similar to a call auction in which the market order Q is placed and then equilibrium achieved in a uniform-price auction. Consider a spot exchange rate of a currency pair as a risky asset. Denote its true value and its expected final value as v and π , respectively. v follows a random walk. Foreign exchange markets are both quote-driven and order-driven markets. Thus, liquidity suppliers can

¹⁰There is a new strand of literature in which the microstructure of foreign exchange markets is modelled, e.g. Evens and Lyons (2002a, 2002b) and Lyons (2001). These models typically focus on the dealer's behaviour while, in our setting, the distinction between liquidity supplier and demander as well as the final investor play an essential role. Here, risk-aversion, inventory risks and adverse selection characterise the decisions of both the (rational) liquidity provider and demander.

be dealers or brokers. We consider two types of agents: first, the liquidity demander who is the most active part in the trade which we hereinafter refer to as the "initiator" or "aggressor"; second, the liquidity provider who is more passive (also called "nonaggressor"). There are N competitive liquidity suppliers who want to maximise their expected utility function. The maximisation program for liquidity supplier i is:

$$\max_{q_i(p)} EU \left[(v - p)q_i(p) + I_i v - \frac{c}{2} q_i^2(p) \right] \quad (2)$$

The initial currency endowment of liquidity supplier i is I_i . ($I = \sum_{n=1}^N \frac{I_i}{N}$ will be the average inventory position.) $\frac{c}{2} q_i^2$ is a quadratic cost function representing market-making administrative costs. We assume that the liquidity supplier has a Constant Absolute Risk Aversion (CARA) utility function with constant absolute risk aversion index is κ . Liquidity provider i optimally designs his limit order schedule by choosing, for each possible price P , the quantity he will offer or demand: $q_i(p)$. By assuming exponential utility functions and normality, his objective function becomes:

$$\max_{q_i(p)} (I_i + q_i) E[v | \theta] - q_i P - \frac{\kappa}{2} (I_i + q_i)^2 Var[v | \theta] - \frac{c}{2} q_i^2 \quad (3)$$

where c is a constant handling cost and θ is the information revealed by the market order submitted by the aggressor who requires an immediate execution (θ will be explicitly defined below). By solving the First Order Condition, we find that $q_i = \frac{E[v|\theta] - p - \kappa Var[v|\theta] I_i}{\kappa Var[v|\theta] + c}$. $\mu_i = E[v | \theta] - \kappa Var[v | \theta] I_i$ can be seen as the marginal valuation for the liquidity supplier i .

As market makers, the aggressor is a risk-averse agent with a CARA utility function and a constant absolute risk aversion index γ . He is endowed with domestic currency amounting to L . In our setting, the initial endowment in an investor's currency plays a pivotal role. It identifies 'the domestic-currency bias'. We assume that the aggressor comes from two groups of agents representing the domestic and foreign market participants. Let us call the endowment of the domestic and foreign group of investors L_D and L_F , and ω_D and $\omega_F = 1 - \omega_D$ their proportion in the market. We can define L as a random vector and the pair $[L_D, L_F]$ has a bivariate normal distribution. The aggressor is also endowed with an initial signal s on the final value v .¹¹ Thus, he can also have informational

¹¹ Lyons (1995) calls for a boarder view of private information in the forex market. See, also, Cao, Evans and Lyons (2006) for a discussion on the nature of (a)symmetric information in FX markets. In particular, dealer's conjectures on aggregate inventories or on other dealers' expectations may motivate trading for reasons apart from portfolio re-allocation or liquidity

reasons to trade. v takes the form of $v = \pi + s + \epsilon$. π is a constant and $E[s] = E[\epsilon] = 0$, and σ^2 stands for the variance of ϵ . The initiator places a market order to trade Q shares. His objective function is:

$$\max_Q (L + Q)(\pi + s) - Qp - \frac{\gamma}{2}\sigma^2 (L + Q)^2 \quad (4)$$

By solving the First Order Condition, we find that $Q = \frac{\pi + s - p}{\gamma\sigma^2} - L$. $\theta = \pi + s - \gamma\sigma^2 L$ can be seen as the informed trader's marginal valuation. The liquidity supplier takes into account the information content of the market order, namely the signal s and the risk-sharing need, L , of the informed trader. In particular, he forms some expectations on the predominant currency endowment, i.e. $E[\omega_D L_D + \omega_F L_F] = l$. By virtue of the Projection theorem, we can solve conditional expectations $E[v | \theta] = E[v] + \frac{Cov(v, \theta)}{Var(v)}(\theta - E[\theta])$ where $\delta = \frac{Cov(v, \theta)}{Var(v)} = \frac{Var(s)}{Var(s) + (\gamma\sigma^2)^2 Var(L)}$. δ represents the relative weight of the noise to signal and quantifies the magnitude of the adverse-selection problem. Since $E[\theta] = \pi - \gamma\sigma^2 l$, the liquidity supplier's conditional expectation is:

$$E[v | \theta] = (1 - \delta)\pi + \delta(\theta + \gamma\sigma^2 l) \quad (5)$$

By setting market clearing as $\sum_{i=1}^N q_i(p) + Q = 0$, we find the equilibrium price to be $P = \alpha + \beta\theta$ where:

$$\alpha = \frac{\pi - \delta(\pi - \gamma\sigma^2 l) - \kappa Var[v | \theta] I}{1 + \frac{c + \kappa Var[v | \theta]}{N\gamma\sigma^2}}, \beta = \frac{\delta + \frac{c + \kappa Var[v | \theta]}{N\gamma\sigma^2}}{1 + \frac{c + \kappa Var[v | \theta]}{N\gamma\sigma^2}} \quad (6)$$

Note that l affects only the intercept and not the slope of the price function. Since the equilibrium price is linear in θ , and θ , in turn, is linear in Q and L , we find that:

$$P = \frac{\alpha}{1 - \beta} + \frac{\beta}{1 - \beta} \gamma\sigma^2 Q, P = (\alpha + \beta\pi + \beta s) - \beta\gamma\sigma^2 L \quad (7)$$

This simple framework shows some intuitive mechanism: the larger the number of liquidity traders participating in the market (N), the lower the market impact, the higher the trading volume and the lower the price impact. In contrast, a rise in the liquidity trader's risk aversion (κ) strengthens the price impact. More importantly, it points to two main causes for the time-of-day patterns: first, liquidity demand and supply; second, information asymmetry. The first brings back to the intraday seasonalities of excess demand for or supply of currencies explained from the Grossman-Miller (1988). During domestic

needs.

working hours, the liquidity provider rationally expects $E[\omega_D L_D] > [E\omega_F L_F]$ since they are aware of the domestic-time segmentation ($\omega_D > \omega_F$, i.e. domestic traders are predominant during domestic working hours) and of the domestic-currency bias ($L_D > L_F$, i.e. domestic trader's initial endowment is biased in domestic currency). From the rational liquidity supplier's perspective, L essentially mirrors the market pressure. This is discernible in equation (6) where, *ceteris paribus*, higher l (i.e. expectations on domestic-currency supremacy) turns into a lower price P for the domestic currency. At the same time, a higher volatility or dispersion in the initial endowment of the aggressors (variance of L) tends to decrease the price impact and augments trading volume.

Information asymmetry represents a second possible explanation. A stronger private signal with respect to the domestic currency value, s , translates into a higher demand (larger Q) and currency appreciation (higher P). On the other hand, higher variance in the private signal (true asset value) increases (decreases) the noise signal (δ) and price impact, and decreases (increases) trading volume.

5 Empirical analysis

Above, we have analysed two possible explanations for the time-of-day patterns: liquidity and information asymmetry effects. These two explanations entail two opposite empirical implications, both of which can be tested.¹² First, significantly positive cross-sectional depreciation (appreciation) of the domestic currency during domestic (foreign) working hours would point more strongly to an intraday seasonally-based excess demand for or supply of foreign currency. Consequently, the marked patterns described above and shown in figure 1A-F would tend to support the inventory hypothesis rather than the asymmetric information approach. In fact, it is implausible that domestic traders should systematically enjoy superior information on a negative (positive) signal during domestic (foreign) trading hours. In this respect, the asymmetric information hypothesis would imply insignificant cross-sectional intraday return averages. Hsieh and Kleidon (1996) arrive at the same result by analysing volatility periodicities on foreign exchange markets. They conclude that these recurrent patterns are not due to the incorporation of private information, as envisioned by standard asymmetric information models, but rather to inventory-bearing

¹²Lyons (1995) tests the inventory and information asymmetry hypotheses using different methods and data. He uses transaction data of one dealer and one broker in the U.S. market for five days during August 1992.

risk inherent in the market-making mechanism.¹³

Second, information asymmetry implies permanent price adjustment, whereas the price impact due to liquidity problems is typically reversed. In fact, the price impact attributable to liquidity-motivated trade and, more in particular, to inventory aspects is temporary since it is not driven by valuable information about true asset value. If asymmetric information were the sole motivation to trade, a sale at the bid would cause a permanent price fall to reflect private information conveyed by that sale. If inventory costs were the only dealer's concern, after a sale at the bid, bid and ask quotes would fall, not to reflect information as in the asymmetric information paradigm, but to discourage additional sales. Over time, however, quotes would return to normal. The same logic holds in case of a purchase. Consequently, reversal (continuation) in intraday price changes revealed by the time-series analysis would tend to support the inventory (asymmetric information) interpretation.¹⁴ The time-series analysis is presented below.

5.1 Time series analysis

To contrast further the liquidity and information asymmetry hypotheses, we conduct a time-series analysis by means of a Seemingly Unrelated Regression (SUR) model relating intraday price dynamics as follows:

$$\mathbf{Y}_t = \mathbf{a} + \mathbf{b}\mathbf{X}_{t-1} + \mathbf{e}_t \quad (8)$$

Where \mathbf{Y}_t is a 6×1 vector 4-hour consecutive return that, taken together, represents the log price over the previous 24 hours, specifically:

$$\mathbf{Y}_t = [r_t^{20-24}, r_t^{16-20}, r_t^{12-16}, r_t^{8-12}, r_t^{4-8}, r_t^{0-4}] \quad (9)$$

where, for instance, r_t^{20-24} designates the return from midday to 4:00 GMT on day t . \mathbf{a} and \mathbf{b} are 6×1 and 6×6 matrices of parameters. \mathbf{X}_{t-1} is a 6×6 matrix containing the previous six 4-hour consecutive returns, as follows:

¹³Likewise, Breedon and Vitale (2005) find that the relationship between exchange rates and forex order flow is mostly due to liquidity effects rather than any information contained in order flow. Further empirical evidence on the relevance of inventory effects in currency markets may be found in Bessembinder (1994), Cao, Evans and Lyons (2006), Flood (1994), Lyons (1995, 1998).

¹⁴This does not mean that return continuation is a necessary condition for observing trading motivated by specific information. In principle, it is possible that an investor with superior information will trade only once and that this will have a permanent impact. However, there are circumstances in which non-public information is processed into price more gradually, e.g. order splitting strategies, front-running trading, information leakages, news bulletins implying time-consuming analysis and so on.

$$\mathbf{X}_{t-1} = \begin{bmatrix} r_t^{16-20} & r_t^{12-16} & r_t^{8-12} & r_t^{4-8} & r_t^{0-4} & r_{t-1}^{20-24} \\ r_t^{12-16} & r_t^{8-12} & r_t^{4-8} & r_t^{0-4} & r_{t-1}^{20-24} & r_{t-1}^{16-20} \\ r_t^{8-12} & r_t^{4-8} & r_t^{0-4} & r_{t-1}^{20-24} & r_{t-1}^{16-20} & r_{t-1}^{12-16} \\ r_t^{4-8} & r_t^{0-4} & r_{t-1}^{20-24} & r_{t-1}^{16-20} & r_{t-1}^{12-16} & r_{t-1}^{8-12} \\ r_t^{0-4} & r_{t-1}^{20-24} & r_{t-1}^{16-20} & r_{t-1}^{12-16} & r_{t-1}^{8-12} & r_{t-1}^{4-8} \\ r_{t-1}^{20-24} & r_{t-1}^{16-20} & r_{t-1}^{12-16} & r_{t-1}^{8-12} & r_{t-1}^{4-8} & r_{t-1}^{0-4} \end{bmatrix} \quad (10)$$

As we have seen above, autocorrelation in intraday returns does not last more than one day and only few 4-hour return periods are significantly related to price movements for the same intraday period of the previous day. Hence, the time-series specification above allows us to assess continuation or reversal patterns through the intraday price discovery process, over an exhaustive period of time. However, this empirical test warrants some important caveats. In particular, it cannot capture liquidity and asymmetric information effects over time periods shorter than four hours.

Three main patterns are discernable in Table 6. First, reversal patterns are visible over two time granularities: four hours before and one day before, for the same intraday time period. This suggests that inventory effects typically result in price setbacks over two consecutive intraday periods and during the same intraday period of the following day.¹⁵ Second, return persistence is less pervasive than price reversal but still observable. In particular, for all the six currency pairs there is a significant positive autocorrelation between the two 4-hour periods constituting US working hours, i.e. 12:00–16:00 and 16:00–20:00 GMT. This continuation effect can be interpreted as a sign of an ongoing process of price adjustments or information asymmetry.¹⁶ Finally, there are intraday periods which are more influential than others. In particular, what happens in the European morning (8:00–12:00 GMT) appears to be inversely related to late trading (20:00–24:00 GMT) in all currencies pairs. On the other hand, yen/dollar movements during Japanese hours (typically midnight to 4:00 GMT) are precursors of US trading activity (16:00–20:00 GMT). Also for the yen/dollar currency pair, price changes during US working hours (12:00–20:00 GMT) tend

¹⁵In his experimental design, Flood (1994) highlights the fact that, through the "hot-potato" mechanism, inventory imbalances can give rise to foreign market inefficiency. BIS (2005) shows that the "hot-potato" trade accounts for more than 50% of daily volume in 2004. Sarno and Taylor (2001) stress that the decentralised nature of forex markets reduces currency market efficiency, especially in terms of price information, arbitrage opportunities, and order execution.

¹⁶Empirical evidence on adverse selection problems in foreign exchange markets may be found, inter alia, in Bjørnnes and Rime (2005), Marsh and O'Rourke (2005), Mende, Menkhoff and Osler (2006) and Payne (2003).

to be positively lagged during the European morning (8:00–12:00 GMT). These lagged price adjustments can be partially explained by the lengthy time needed to absorb news (e.g. Evans and Lyons (2005)), the partial geographical integration of foreign exchange markets (e.g. Evans and Lyons (2002b) and Menkhoff and Schmeling (2006)) and the "meteor shower" hypothesis¹⁷ (Engle, Ito and Lin (1990)).

5.2 Holiday effects

Another way to test the liquidity hypothesis is to compare regular trading with the special market conditions that prevail when one of the two counterpart's activity is at a low level. The natural way to test this is to see what happens when one of the two counterpart countries or regions is on holiday.¹⁸ The list of holidays is included in Table 1. These data were kindly provided by the Swiss Banking Association, which keeps track of the official bank holidays for each country on an annual basis. We consider the case of non-overlapping national¹⁹ holidays, i.e. when there is a bank holiday in the foreign country while people in the home country are working as usual. For the European Union, we consider German holidays. We have tested other definitions of European and UK holidays and the main results remain essentially unchanged.²⁰ The lowest number of non-overlapping days is 36 (euro-dollar) and the highest is 100 (yen-dollar).

Days when the foreign country is on holiday and the domestic country is regularly working should represent a trading environment in which the market is relatively more (less) populated by domestic (foreign) traders. Using the terminology set out above, we might expect a predominance of market participants who are positively endowed with the domestic currency (L) and a higher proportion of domestic agents (ω_D) together with a lower dispersion or heterogeneity of their endowment (variance of L). In turn, this market condition should strengthen liquidity traders' inventory imbalance and risk. If this

¹⁷By meteorological analogy, Engle, Ito and Lin (1990) refer to a meteor shower for a situation in which volatility spreads across regions in chronological order ("it rains down on the earth as it turns") whereas the term heat wave refers to volatility transmission specific to one locality ("a hot day in New York is likely to be followed by another hot day in New York").

¹⁸Bessembinder (1994) analyses patterns in exchange rate volatility, trading volume and spreads before holidays. He finds that spreads do not increase by a significant margin before any single-country holiday but only before holidays in multiple financial centres.

¹⁹We also tested the inclusion of holidays in some regions of a country, e.g. Corpus Christi in Germany. The results remain essentially unchanged. Therefore we decided to consider only national holidays.

²⁰We analysed several combinations by including or excluding from German holidays official bank holidays in Belgium, France, Holland, Italy and Spain. For UK, we considered official holidays in England and Wales. The inclusion of specific holidays in Scotland and North Ireland does not change the main findings.

holds, we would observe stronger (weaker) domestic (foreign) pressure to sell (pressure to buy) domestic currency during domestic working hours. This imbalance would ultimately result in stronger depreciation of the home currency during domestic working hours and weaker appreciation during foreign working hours. On the other hand, on days when the domestic country is on holiday and the foreign country is regularly working should be characterised by weaker (stronger) domestic (foreign) currency depreciation during domestic (foreign) trading hours.

Table 7 reports the average and standard deviation of intraday returns on domestic and foreign holidays. These statistics are accompanied by tests for inequality in means (t -tests) and variances (F-tests).²¹ The empirical findings provide a remarkable amount of support for our hypotheses. For instance, let us consider the CHF/USD results. On regular trading days (i.e. no bank holiday in Switzerland and in the US) the US dollar appreciates by an average of 7.2% during Swiss working hours. But when there is a holiday in Switzerland, the sell-pressure exerted by Swiss investors slackens. Buy-pressure in favour of the Swiss franc during Swiss trading hours is normally marginal, and thus the dollar even depreciates by 4.6%. The opposite mechanism holds when the US rather than the Swiss market is in holiday. The sell-pressure against the Swiss franc normally exerted by Swiss investors during Swiss working hours exacerbates. Thus, the franc loses 19.8% instead of its usual depreciation of 7.2%. A mirror-image situation applies for US working hours: Swiss holidays lead to greater depreciation in the dollar. Overall, the findings on bank holiday effects provide additional support for the liquidity hypothesis and offer further compelling evidence for the economic significance of the time-of-day phenomenon.

6 Conclusion

This study reveals a puzzling time-of-day pattern which affects foreign exchange markets. Domestic currencies tend to depreciate during domestic working time and to appreciate during the working hours of the counterpart country. This phenomenon is highly significant in statistical and economic terms. Its existence and persistence over a number of years contradicts the random walk and market efficiency hypothesis. On the one hand, one can try to explain these patterns by evoking liquidity premia, "Herstatt risk" or settlement issues. On the other hand, it is hard to explain why traders systematically incur unfavourable trans-

²¹ Presumably, F-tests for testing equality in variances in Table 7 are not F-distributed when conditional variances are time-varying and the errors are non-normal. This may represent a limit for the F-tests.

action prices instead of taking full advantage of a round-the-clock global and liquid market. Furthermore, this anomaly appears to be profitable, even after accounting for reasonably competitive transaction costs and using elementary trading rules.

The explanation of these time-of-day trends seems to reside in microstructural and behavioural aspects of foreign exchange markets. The simple theoretical reasoning used in this study suggests two main explanations: intraday patterns in liquidity demand and information asymmetry. If we consider the marked regularity and well-defined price direction of the currency movements, the latter argument is hardly sustainable. Intraday time-series analysis and holiday effects also provide more support for the liquidity hypothesis, although some asymmetric information effects can not be ruled out. Consequently, we would tend to maintain that the combination of these two main factors accounts for this intraday pattern. First, domestic investors' portfolios are heavily biased towards domestic currencies ('domestic-currency bias'). This natural bias makes domestic traders incline towards foreign currencies. Second, currency markets are characterised by geographical and chronological segmentation ('domestic-time bias'). The conduct of domestic trading tends to cluster in domestic working hours. The combination of these two factors generates a supply-pressure (demand-pressure) on the domestic currency during domestic (counterpart) working hours that is transformed into cyclical inventory effects and, in turns, into a lower price for domestic (foreign) currency.

The puzzling evidence reported in this study raises significant questions that could be investigated in future research work. In particular, it would be useful to conduct a similar study to ours, studying order flow data for foreign exchange markets. Despite their limited accessibility, these data would enable researchers to empirically test some theoretical implications that we have left unexplored.

References

- [1] Andersen, T. G., and T. Bollerslev (1997), Intraday Periodicity and Volatility Persistence in Financial Markets, *Journal of Empirical Finance* 4, 115-158.
- [2] Andersen, T. G., and T. Bollerslev (1998), Deutsche Mark-Dollar Volatility: Intraday Activity Patterns, Macroeconomic Announcements, and Longer Run Dependencies, *Journal of Finance* 53, 219-265.
- [3] Andersen, T. G., T. Bollerslev, F. X. Diebold and C. Vega (2003), Micro Effects of Macro Announcements: Real-Time Price Discovery in Foreign Exchange, *American Economic Review* 93, 38-62.
- [4] Baillie, R. T., and T. Bollerslev (1998), Intra-Day and Inter-Market Volatility in Foreign Exchange Rates, *Review of Economic Studies* 58, 565-585.
- [5] Bank for International Settlements (2005), Triennial Central Bank Survey: Foreign Exchange and Derivatives Market Activity in 2004, Basle, Bank for International Settlements.
- [6] Bauwens, L., W. Ben Omrane and P. Giot (2005), News Announcements, Market Activity and Volatility in the Euro-Dollar Foreign Exchange Market, *Journal of International Money and Finance* 24, 1108-1125.
- [7] Bessembinder, H. (1994), Bid-Ask Spread in the Interbank Foreign Exchange Markets, *Journal of Financial Economics* 35, 317-348.
- [8] Biais, B, L. Glosten, and C. Spatt (2005), Market Microstructure: a Survey of Microfoundations, Empirical Results, and Policy Implications, *Journal of Financial Markets* 8, 217-264.
- [9] Bjørnnes, G. H., and D. Rime (2005), Dealer Behaviour and Trading Systems in Foreign Exchange Markets, *Journal of Financial Economics* 75, 571-605.
- [10] Bollerslev, T., and I. Domowitz (1993), Trading Patterns and Prices in the Interbank Foreign Exchange Market, *Journal of Finance* 48, 1421-1443.
- [11] Breedon, F., and P. Vitale (2005), An Empirical Study of Liquidity and Information Effects of Order Flow on Exchange Rates, CEPR Working Paper.
- [12] Cao, H. H., M. D. Evans and R. K. Lyons (2006), Inventory Information, *Journal of Business* 79, 325-363.

- [13] Dacorogna, M. M., U. A. Müller, R. J. Nagler, R. B. Olsen and O. Pictet (1993), A Geographical Model for the Daily and Weekly Seasonal Volatility in the Foreign Exchange Market, *Journal of International Money and Finance* 12, 413-438.
- [14] Dominguez, K. M. (1998), Central bank intervention and exchange rate volatility, *Journal of International Money and Finance* 17, 161-190.
- [15] Ederington, L. H., and J. H. Lee (1993), How Markets Process Information: News Releases and Volatility, *Journal of Finance* 48, 1161-1191.
- [16] Engle, R. F., T. Ito and W. Lin (1990), Meteor Showers or Heat Waves? Heteroskedastic Intraday Volatility in the Foreign Exchange Market, *Econometrica* 58, 525-542..
- [17] Evans, M. D. D., and R. K. Lyons (2002a), Order Flow and Exchange Rate Determinants, *Journal of Political Economy* 110, 170-180.
- [18] Evans, M. D. D., and R. K. Lyons (2002b), Informational Integration and FX Trading, *Journal of International Money and Finance* 21, 807-831.
- [19] Evans, M. D. D., and R. K. Lyons (2005), Do Currency Markets Absorb News Quickly?, *Journal of International Money and Finance* 24, 197-217.
- [20] Flood, M. (1994), Market Structure and Inefficiency in the Foreign Exchange Market, *Journal of International Money and Finance* 13, 131-158.
- [21] French, K. R. (1980), Stock Returns and the Weekend Effect, *Journal of Financial Economics* 8, 55-69.
- [22] Froot, K. A. (1991), Japanese Foreign Direct Investment, NBER Working Paper # 3737.
- [23] Goodhart, C., T. Ito and R. Payne (1996), One Day in June 1993: A Study of the Working of the Reuters 2000-2 Electronic Foreign Exchange Trading System, in J.A. Frankel, G. Galli, and A. Giovannini (eds.) *The Microstructure of Foreign Exchange Markets*, Chicago: The University Chicago Press: 107-179.
- [24] Goodhart, C., R. Love, R. Payne and D. Rime (2002), Analysis of Spread in the Dollar/Euro and Deutsche-Mark/Dollar Foreign Exchange Markets, *Economic Policy* 17, 536-552.
- [25] Grossman, S. J., and M. H. Miller (1988), Liquidity and Market Structure, *Journal of Finance* 43, 617-633.

- [26] Hsieh, D. A., and A. W. Kleidon (1996), Bid-Ask Spreads in Foreign Exchange Markets: Implication of Asymmetric Information, in J.A. Frankel, G. Galli, and A. Giovannini (eds.) *The Microstructure of Foreign Exchange Markets*, Chicago: The University Chicago Press: 41-67.
- [27] Ito, T. (1987), The Intra-daily Exchange Rate Dynamics and Monetary Policies After the G5 Agreement, *Journal of the Japanese and International Economics* 1, 275-298.
- [28] Ito, T., and Y. Hashimoto (2005), Intra-day Seasonality in Activities of the Foreign Exchange Markets: Evidence from the Electronic Broking System, ISER Working Paper.
- [29] Ito, T., and V. V. Roley (1987), News from the U.S. and the Japan which Moves the Yen/Dollar Exchange Rate?, *Journal of Monetary Economics* 19, 255-278.
- [30] Ito, T., and V. V. Roley (1991), Intraday Yen/Dollar Exchange Rate Movements: News or Noise?, *Journal of International Financial Markets, Institutions and Money* 1, 1-31.
- [31] Lewis, K. K. (1999), Trying to Explain Home Bias in Equities and Consumption, *Journal of Economic Literature* 37, 571-608.
- [32] Lyons, R. K. (1995), Tests of Microstructural Hypotheses in the Foreign Exchange Market, *Journal of Financial Economics* 39, 321-351.
- [33] Lyons, R. K. (1998), Profits and Position Controls: a Week of FX Dealing, *Journal of International Money & Finance* 17, 97-115.
- [34] Lyons, R. K. (2001), *The Microstructure Approach to Exchange Rates*, MIT Press, Cambridge, Massachusetts.
- [35] Marsh, I., and C. O'Rourke (2005), Customer Order Flow and Exchange Rate Movements: Is There Really Information Content?, Working Paper.
- [36] Martens, M., and P. Kofman, , 1998. The Inefficiency of Reuters Foreign Exchange Quotes, *Journal of Banking and Finance* 22, 347-366.
- [37] Massa, M., and A. Simonov (2006), Hedging, Familiarity and Portfolio Choice, *Review of Financial Studies* 19, 633-685.
- [38] Menkhoff, L., and M. Schmeling (2006), Local Information in Foreign Exchange Markets, Discussion Paper #331 University of Hannover.

- [39] Müller, U. A., M. M. Dacorogna, R. B. Olsen, O. V. Pictet, M. Schwarz and C. Morgeneegg (1990), Statistical Study of Foreign Exchange Rates, Empirical Evidence of a Price Change Law, and Intraday Analysis, *Journal of Banking and Finance* 14, 1189-1208.
- [40] Olsen, R. B., A. U. A. Müller, M. M. Dacorogna, and O. V. Pictet & R. R. Davé & D. M. Guillaume (1997), From the bird's eye to the microscope: A survey of new stylised facts of the intra-daily foreign exchange markets, *Finance & Stochastics* 1, 95-129.
- [41] Osler, C. L., A. Mende, and L. Menkhoff (2006), Price Discovery in Currency Markets, Working Paper, EFA Meetings.
- [42] Payne, R. (2003), Informed Trade in Spot Foreign Exchange Markets: an Empirical Investigation, *Journal of International Economics* 61, 307-329.
- [43] Sarno, L., and M. P. Taylor (2001), The Microstructure of the Foreign-Exchange Market: a Selective Survey of the Literature, Working Paper, Princeton Studies in International Economics No. 89.
- [44] White, H. (1980). A Heteroscedasticity-Consistent Covariance Matrix Estimator and a Direct Test for Heteroscedasticity, *Econometrica* 48, 817-838.

Table 1: Weekend definitions and official holidays by country.

Panel A: Weekend definitions.

Beginning of the Week				End of the Week			
Ccy	GMT	Local ccy 1	Local ccy 2	GMT	Local ccy 1	Local ccy 2	h excluded
CHFUSD	Mon 5:00	Mon 6:00	Sun 24:00	Fri 23:00	Fri 24:00	Fri 18:00	54
DEMUSD	Mon 5:00	Mon 6:00	Sun 24:00	Fri 23:00	Fri 24:00	Fri 18:00	54
EURUSD	Mon 5:00	Mon 6:00	Sun 24:00	Fri 23:00	Fri 24:00	Fri 18:00	54
GBPUSD	Mon 5:00	Mon 5:00	Sun 24:00	Fri 23:00	Fri 23:00	Fri 18:00	54
JPYEUR	Sun 21:00	Mon 6:00	Sun 22:00	Fri 17:00	Sat 2:00	Fri 18:00	52
JPYUSD	Sun 21:00	Mon 6:00	Sun 16:00	Fri 23:00	Sat 8:00	Fri 18:00	46

Panel B: Official holidays, by country.

Germany	Japan	Switzerland	UK	US
New Year	New Year	New Year	New Year	New Year
Good Friday	Bank holidays	Good Friday	Good Friday	M. L. King Day
Easter Monday	Coming of Age Day	Easter Monday	Easter Monday	Presidents' Day
Labour Day	Vernal equinox Day	Ascension	Early May Bank Hol.	Memorial Day
Ascension	Greenery Day	Whit Monday	Spring Bank Hol.	Independence Day
Whit Monday	Constitution Day	Confederation Day	Summer Bank Hol.	Labor Day
Union Day	Children's Day	Christmas Day	Christmas Day	Columbus Day
Christmas Day	Marine Day	St Stephan's Day	Boxing Day	Veterans Day
Boxing Day	Health-Sports Day	New Year's Eve		Thanksgiving Day
New Years Eve	Culture Day			Christmas Day
	Labour Day			
	Thanksgiving Day			
	Ordinary holiday			
	The Emperor's Day			
	Autumn equinox Day			
	Founding of the Nation			
	Respect-for-the-aged Day			

Table 2: Descriptive statistics on CHF/USD, DEM/USD and EUR/USD exchange rate returns.

This table shows the descriptive statistics for intradaily and daily returns, excluding weekends, for CHF/USD, DEM/USD and EUR/USD currency pairs. Intraday (log) returns are calculated over non-overlapping 4-hour periods and then annualised by multiplying by 260. The first row shows the time of the day (GMT) and the second row indicates which country or region is working during the different hours of the day. "Freq. Up" means the proportion of positive returns (in %). The table shows the *t*-test and Chi-square for testing the null hypothesis that there is equality in means and medians, and Q-statistic for testing the null hypothesis that there is no autocorrelation at lag 1. The Sign Test assesses the null hypothesis that positive and negative returns are proportionally equally represented. Significance at 1%, 5% and 10% is denoted by ***, ** and *, respectively.

EST	19-23	23-3	3-7	7-11	11-15	15-19	Whole
GMT	0-4	4-8	8-12	12-16	16-20	20-24	Daily
Working time	JP	JP - EU	EU	EU - US	US	US	
CHF/USD							
Mean	-1.00%	3.1%**	7.2%***	-6.1%***	-3.0%**	-0.80%	-0.10%
Median	-1.00%	2.8%***	7.9%***	-3.9%***	0.00%	0.00%	0.00%
Maximum	2.709	2.811	4.319	7.108	4.368	2.048	7.96
Minimum	-3.229	-3.585	-6.091	-5.405	-5.822	-3.885	-7.382
Std. Dev.	3.3%	5.1%	6.7%	5.4%	2.6%	2.9%	4.7%
Skewness	-0.12	-0.16	-0.25	-0.05	-0.25	-0.44	-0.21
Kurtosis	8.28	6.09	6.14	5.34	6.41	8.66	6.05
# of Obs	3274	3274	3274	3274	2620	2620	74652
Freq. Up	48.3*	52%**	54.8**	48.3*	49.1	49.3	49.9
Q-Stat 1	2.89*	0.15	7.96***	31.90***	4.77**	2.58	-
DEM/USD							
Mean	0.50%	1.60%	5.0%***	-5.8%***	0.30%	0.30%	0.30%
Median	0.80%	0.00%	3.8%***	-6.6%***	0.80%	0.00%	0.00%
Maximum	1.753	2.315	3.475	6.202	4.753	1.821	6.8
Minimum	-2.49	-3.212	-4.447	-4.849	-4.928	-2.95	-5.763
Std. Dev.	2.7%	4.1%	5.7%	5.0%	2.5%	2.8%	4.1%
Skewness	-0.34	0.08	-0.03	0.22	-0.27	-0.75	-0.1
Kurtosis	6.7	6.54	7.15	6.83	8.71	10.65	7.63
# of Obs	1250	1561	1561	1561	1561	1249	35595
Freq. Up	50.1	52.1**	53.6***	46.5***	50.1	51.0	50.2
Q-Stat 1	1.07	0.02	27.86***	18.86***	6.51**	0.87	-
EUR/USD							
Mean	-1.40%	-3.10%	10.3%***	-2.30%	-6.4%***	1.50%	-0.30%
Median	0.00%	-1.4%*	10.8%***	1.40%	-5.7%***	1.10%	0.00%
Maximum	2.569	2.758	4.034	3.433	4.313	1.641	5.072
Minimum	-1.751	-3.732	-4.15	-4.645	-4.828	-2.379	-8.956
Std. Dev.	3.2%	5.1%	6.2%	4.6%	2.4%	2.7%	4.4%
Skewness	0.2	-0.38	-0.14	-0.21	-0.14	-0.06	-0.22
Kurtosis	6.29	6.67	5.31	4.4	6.41	6.08	5.49
# of Obs	1371	1713	1713	1713	1713	1371	39060
Freq. Up	49.6	48.3*	57.3***	50.6	46.1***	51.3	49.9
Q-Stat 1	0.22	3.48*	0.01	19.70***	0.83	1.24	-

Table 3: Descriptive statistics on GBP/USD, JPY/EUR and JPY/USD exchange rate returns.

This table shows the descriptive statistics for intradaily and daily returns, excluding weekends, for GBP/USD, JPY/EUR and JPY/USD currency pairs. Intraday (log) returns are calculated over non-overlapping 4-hour periods and then annualised by multiplying by 260. The first row shows the time of the day (GMT) and the second row indicates which country or region is working during the different hours of the day. "Freq. Up" means the proportion of positive returns (in %). The table shows the *t*-test and Chi-square for testing the null hypothesis that there is equality in means and medians, and Q-statistic for testing the null hypothesis that there is no autocorrelation at lag 1. The Sign Test assesses the null hypothesis that positive and negative returns are proportionally equally represented. Significance at 1%, 5% and 10% is denoted by ***, ** and *, respectively.

EST	19-23	23-3	3-7	7-11	11-15	15-19	Whole
GMT	0-4	4-8	8-12	12-16	16-20	20-24	Daily
Working time	JP	JP - EU	EU	EU - US	US	US	
GBP/USD							
Mean	-1.0%	3.4%***	2.4%***	-3.5%***	-5.0%***	-2.8%***	-0.3%
Median	-0.9%	2.4%***	2.4%***	-2.7%***	-3.7%***	2.6%***	0.0%
Maximum	2.450	3.017	3.935	5.135	3.865	2.807	5.135
Minimum	-1.831	-3.009	-3.785	-4.319	-5.002	-1.294	-5.002
Std. Dev.	2.1%	2.9%	4.1%	5.1%	3.7%	1.9%	3.5%
Skewness	0.05	0.20	0.03	-0.09	-0.11	0.27	-0.06
Kurtosis	6.77	6.12	5.76	5.59	10.22	7.65	8.67
# of Obs	2623	3281	3281	3281	3281	2621	75452
Freq. Up	47***	51.8*	52.5***	47.5***	45.2***	53.3***	49.7
Q-Stat 1	0.06	6.07**	1.04	30.69***	0.16	0.00	-
JPY/EUR							
Mean	2.8%*	-2.80%	-8.0%***	-0.90%	6.2%***	0.10%	-0.60%
Median	1.30%	-1.4%*	-4.2%***	0.00%	5.7%***	0.90%	0.00%
Maximum	4.791	4.961	4.239	5.525	3.88	4.627	8.942
Minimum	-7.435	-4.56	-5.09	-4.791	-6.033	-9.409	-9.409
Std. Dev.	4.2%	6.0%	6.4%	4.8%	3.5%	4.6%	4.9%
Skewness	-0.07	-0.01	-0.33	-0.08	-0.31	-2.68	-0.18
Kurtosis	13.16	8.23	5.96	5.51	8.26	51.72	7.3
# of Obs	1713	1713	1713	1713	1370	1712	39836
Freq. Up	51.5	48.2	47.7**	50.2	54.1***	51.5	50.3
Q-Stat 1	2.91	0.64	0.03	7.70***	0.95	0.55	-
JPY/USD							
Mean	2.7%**	-2.40%	-0.60%	-4.0%***	2.8%**	0.30%	-0.20%
Median	1.3%*	-1.3%*	0.00%	-3.7%***	2.5%**	1.10%	0.00%
Maximum	5.521	4.587	7.894	6.045	9.862	5.384	14.365
Minimum	-9.998	-6.118	-15.034	-8.348	-8.773	-4.153	-21.739
Std. Dev.	3.9%	5.4%	5.1%	5.3%	3.3%	4.8%	4.7%
Skewness	-0.66	-0.34	-1.89	-0.42	-0.04	-0.32	-0.75
Kurtosis	17.4	13.63	39.72	11.03	15.18	15.02	24.96
# of Obs	3274	3274	3274	3274	3274	3597	79219
Freq. Up	51.2	47.9**	50.3	47.8***	50.2	51.2	50.3
Q-Stat 1	11.26***	9.43***	0.04	8.87***	4.12**	0	-

Table 4: Four-hour returns patterns across working days.

For each currency pair, this table shows average daily and intradaily returns during the working week. The table shows the t -test for testing the null hypothesis that there is equality in means between the average return over a specific 4-hour period of a given day of the week and the average return during the same intraday period of all the working days. Significance at 1% and 5% is denoted by ** and *, respectively.

CHF/USD	Mon	Tue	Wed	Thu	Fri	Intraday
From 0 to 4		0.90%	-1.20%	-4.00%	1.20%	-1.00%
From 4 to 8	2.90%	1.80%	2.60%	2.60%	5.00%	2.40%
From 8 to 12	10.2%*	2.4%*	3.40%	6.90%	7.00%	7.20%
From 12 to 16	-4.60%	-3.40%	-0.80%	-7.10%	-7.00%	-5.20%
From 16 to 20	-2.20%	-6.5%*	-1.30%	-7.9%**	1.1%**	-3.20%
From 20 to 24	-0.30%	-0.50%	-0.40%	-2.30%		-0.80%
Day-effect	1.20%	-0.80%	0.40%	-1.90%	0.80%	0.00%
DEM/USD	Mon	Tue	Wed	Thu	Fri	Intraday
From 0 to 4		1.80%	0.10%	-3.00%	3.20%	0.50%
From 4 to 8	3.60%	1.10%	-0.80%	-2.20%	6.50%	1.60%
From 8 to 12	7.70%	-0.10%	9.7%**	6.80%	1.0%*	5.00%
From 12 to 16	-11.7%**	1.7%**	-4.80%	-6.00%	-8.30%	-5.80%
From 16 to 20	3.20%	-1.20%	0.70%	-10.8%**	9.8%**	0.30%
From 20 to 24	-1.30%	1.40%	1.30%	-0.30%		0.30%
Day-effect	0.50%	0.40%	0.90%	-2.70%	2.30%	0.00%
EUR/USD	Mon	Tue	Wed	Thu	Fri	Intraday
From 0 to 4		1.00%	-2.70%	-3.10%	-0.60%	-1.40%
From 4 to 8	-5.20%	-3.90%	-6.10%	-0.60%	0.50%	-3.10%
From 8 to 12	13.7%*	8.70%	14.6%**	9.30%	5.3%**	10.30%
From 12 to 16	1.5%*	-10.5%**	2.6%*	-4.70%	-0.70%	-2.30%
From 16 to 20	-5.80%	-7.40%	-3.90%	-8.70%	-6.20%	-6.40%
From 20 to 24	4.40%	-0.20%	2.90%	-1.00%		1.50%
Day-effect	1.10%	-1.60%	1.00%	-1.00%	-0.80%	0.00%
GBP/USD	Mon	Tue	Wed	Thu	Fri	Intraday
From 0 to 4		-0.7%	-2.2%	-1.6%	0.6%	-1.0%
From 4 to 8	1.6%	3.0%	4.3%	2.4%	5.4%	3.4%
From 8 to 12	2.7%	1.1%	4.7%**	1.3%	2.4%	2.4%
From 12 to 16	-2.2%	-1.8%	-1.7%	-9.7%**	-2.1%	-3.5%
From 16 to 20	-2.9%	-5.7%	-4.5%	-10.5%**	-1.2%	-5.0%
From 20 to 24	2.3%	2.5%	2.4%	3.9%		2.8%
Day-effect	-0.6%	-0.1%	0.4%	-2.4%	1.2%	-0.3%
JPY/EUR	Mon	Tue	Wed	Thu	Fri	Intraday
From 0 to 4	-3.7%*	3.40%	2.50%	1.50%	10.5%**	2.90%
From 4 to 8	-1.70%	-0.20%	-0.40%	-7.1%*	-4.50%	-2.80%
From 8 to 12	-15.7%**	-7.40%	-5.70%	-5.10%	-5.30%	-7.80%
From 12 to 16	2.8%**	1.60%	-5.7%**	1.50%	-4.6%*	-0.90%
From 16 to 20	6.10%	-0.10%	8.00%	10.90%		6.20%
From 20 to 24	0.50%	2.40%	-1.90%	6.70%		0.20%
Day-effect	-2.60%	0.00%	-0.10%	0.10%	0.50%	-0.60%
JPY/USD	Mon	Tue	Wed	Thu	Fri	Intraday
From 0 to 4	-1.5%*	2.60%	2.50%	-3.5%**	13.6%**	2.70%
From 4 to 8	-2.40%	-3.00%	-4.50%	-0.10%	-1.80%	-2.50%
From 8 to 12	0.40%	0.80%	3.4%**	-3.30%	-4.5%*	-0.60%
From 12 to 16	-5.20%	-4.80%	-0.70%	-8.1%**	-1.00%	-4.00%
From 16 to 20	4.70%	-5.8%**	4.60%	3.90%	6.6%*	2.80%
From 20 to 24	2.50%	-1.90%	0.50%	-0.60%	-0.40%	0.30%
Day-effect	-0.50%	-1.80%	1.10%	-2.20%	2.50%	0.00%

Table 5: Strategy performance.

This table shows the performance of different trading strategies implemented at specific times during the working week. The long (short) trading rule takes a 4-hour long (short) position in domestic currency each working day at times which coincide with pre-established foreign (domestic) working hours. The long-short strategy combines the first two rules. The fourth and fifth trading rules implement a short-long strategy on a specific day in the working week, i.e. Mondays, Thursdays or Fridays. Taking annualised values, performance is evaluated in terms of the mean return, standard deviation and Sharpe ratio. Columns 5-7 show the results of the market model estimation where the dependent variable is the intraday return on a given day resulting from one of the five trading strategies, while the explanatory variables are a constant (alpha) and the daily return on the respective currency pair (beta). R-2 indicates the adjusted R-squared. Column 8 shows the break-even cost (BEC) for each currency strategy, i.e. the implicit maximum cost necessary to avoid incurring losses. Using the Reuters representative quotes, the last column shows the average bid-ask spread size (RS) surrounding the beginning and end time of the intraday holding periods. The t-statistic is used to test the hypothesis that a regression coefficient is equal to zero. Significance at 1% and 5% is denoted by ** and *, respectively.

	Mean	StDev	SR	Alpha	Beta	R-2	Break- Even Cost	Reuters Spread
CHF/USD								
Long 8:00-12:00	7.21%	5.12%	1.41	0.073**	0.196**	18.6%	2.8	6.2
Short 12:00-16:00	5.17%	6.68%	0.77	0.049**	-0.377**	40.3%	2.0	5.6
Long+Short	12.38%	8.43%	1.47	0.123**	-0.181**	5.8%	2.4	5.9
Long+Short Mondays	14.76%	7.29%	2.02	0.156**	-0.105*	2.1%	14.2	5.9
Long+Short Thursday	13.95%	9.14%	1.53	0.113**	-0.218**	7.3%	13.4	5.9
DEM/USD								
Long 8:00-12:00	5.01%	4.09%	1.22	0.048**	0.075**	3.4%	1.9	7.4
Short 12:00-16:00	5.80%	5.71%	1.02	0.059**	-0.087**	2.3%	2.2	7.4
Long+Short	10.81%	6.98%	1.55	0.108**	-0.011	0.9%	2.1	7.3
Long+Short Mondays	19.39%	5.45%	3.56	0.197**	-0.065*	1.2%	18.6	7.3
Long+Short Thursday	12.81%	7.89%	1.62	0.011**	-0.252**	11.1%	12.3	7.4
EUR/USD								
Long 8:00-12:00	10.32%	5.12%	2.02	0.107**	0.215**	19.3%	4.0	3.1
Short 16:00-20:00	6.39%	4.63%	1.38	0.060**	-0.223**	25.5%	2.5	2.9
Long+Short	16.71%	6.95%	2.41	0.167**	-0.009	0.8%	3.2	3.0
Long+Short Monday s	19.48%	6.67%	2.92	0.186**	0.120**	2.4%	18.7	2.9
Long+Short Thursday	18.01%	7.18%	2.51	0.177**	-0.032	0.2%	17.3	2.9
GBP/USD								
Long 8:00-12:00	2.44%	4.07%	0.60	0.025***	0.188***	16.0%	1.0	5.4
Short 12:00-16:00	3.49%	5.11%	0.68	0.032***	-0.366***	38.7%	1.3	5.3
Long+Short	5.93%	6.59%	0.90	0.059***	-0.179***	5.5%	1.1	5.4
Long+Short Monday s	4.90%	5.55%	0.88	0.049	-0.164***	6.0%	4.8	5.3
Long+Short Thursday	10.99%	7.09%	1.55	0.101***	-0.192***	4.9%	10.6	5.3
JPY/EUR								
Long 0:00-4:00	2.84%	4.59%	0.62	0.032*	0.132**	11.5%	1.1	6.1
Short 8:00-12:00	8.00%	5.96%	1.34	0.074**	-0.249**	24.3%	3.1	6.5
Long+Short	10.84%	7.43%	1.46	0.105**	-0.117**	3.5%	2.1	6.4
Long+Short Monday s	11.84%	9.05%	1.31	0.122**	-0.108	2.5%	11.4	6.2
Long+Short Friday s	15.75%	7.14%	2.2	0.158**	-0.153**	6.5%	15.1	6.2
JPY/USD								
Long 0:00-4:00	2.73%	4.79%	0.57	0.021	0.195**	21.5%	1.1	3.1
Short 12:00-16:00	3.97%	5.12%	0.78	0.032	-0.176**	18.5%	1.5	2.9
Long+Short	6.70%	6.94%	0.96	0.053	0.019	0.1%	1.3	3.0
Long+Short Monday s	3.66%	7.27%	0.5	0.156**	0.205**	7.2%	3.5	3.1
Long+Short Friday s	14.61%	7.11%	2.06	0.142**	0.036	0.4%	14.0	3.0

Table 6: The SUR model regression on 4-hour intraday returns.

This table shows the estimates from a Seemingly Unrelated Regression (SUR) model that analyses intraday price dynamics. The first (second) column titled Y (X) reports the elements in a matrix of the response (explanatory) variables. The day is broken down into six 4-hour periods. Thus, r_t^{h-h+4} designates the return from intraday time h to four hours ahead (GMT) on day t . The t -statistic is used to test the hypothesis that a regression coefficient is equal to zero. Significance at 1% and 5% is denoted by ** and *, respectively. R squares are also reported.

Y	X	CHFUSD	DEMUSD	EURUSD	GBPUSD	JPYEUR	JPYUSD
R_t^{20-24}	Constant	-0.001	0.002	0.004	0.000**	-0.001	-0.000
	R_t^{16-20}	-0.018*	-0.023*	-0.011	-0.070***	-0.057**	-0.050**
	R_t^{12-16}	0.009	0.005	0.002	-0.007	-0.008	-0.023*
	R_t^{8-12}	-0.040**	-0.036**	-0.004	-0.014*	-0.086**	-0.055**
	R_t^{4-8}	-0.004	-0.01	0.003	0.002	0.005	-0.034*
	R_t^{0-4}	0.011	0.014	-0.178**	0.051***	-0.01	0.024*
	R_{t-1}^{20-24}	-0.040*	-0.02	-0.034	0.016	0.024	0.02
	R2	1.20%	0.90%	4.20%	2.7%	2.70%	1.90%
R_t^{16-20}	Constant	-0.012*	0.002	-0.023**	-0.000***	0.020**	0.012*
	R_t^{12-16}	0.068**	0.063**	0.057**	0.051***	0.040*	0.045*
	R_t^{8-12}	0.01	0.026	-0.009	0.001	-0.011	-0.01
	R_t^{4-8}	0.053	0.042	0.016	0.031	0.049*	0.031
	R_t^{0-4}	-0.003	0.022	0.089	0.072**	0.017	0.039*
	R_{t-1}^{20-24}	-0.057	-0.002	-0.092	0.032	0.056	0.094**
	R_{t-1}^{16-20}	-0.031	-0.065**	-0.021	-0.001	-0.019	-0.025
	R2	1.00%	1.00%	1.10%	0.7%	0.90%	0.80%
R_t^{12-16}	Constant	-0.021**	-0.025**	-0.01	-0.000***	-0.001	-0.016**
	R_t^{8-12}	-0.008	0.013	-0.028	-0.016	0.038	0.008
	R_t^{4-8}	-0.059	-0.091	0.001	0.056*	-0.007	0.031
	R_t^{0-4}	0.038	0.068	-0.017	-0.024	-0.012	0.02
	R_{t-1}^{20-24}	0.06	0.072	-0.063	0.055	0.024	0.04
	R_{t-1}^{16-20}	0.017	0.049	-0.047	0.012	-0.038	-0.042*
	R_{t-1}^{12-16}	-0.100**	-0.114**	-0.103**	-0.099***	-0.067**	-0.051**
	R2	1.10%	1.80%	1.40%	1.1%	0.70%	0.60%
R_t^{8-12}	Constant	0.030**	0.022**	0.038**	0.000**	-0.032**	-0.003
	R_t^{4-8}	-0.080**	-0.067	-0.091*	-0.126***	-0.039	-0.036
	R_t^{0-4}	0.054	0.019	0.065	-0.007	0.045	0.050*
	R_{t-1}^{20-24}	0	-0.01	-0.041	-0.052	0.047	0.056
	R_{t-1}^{16-20}	0.004	-0.021	-0.024	-0.007	0.035	0.108**
	R_{t-1}^{12-16}	0.005	-0.011	0.038	0.011	0.052*	0.078**
	R_{t-1}^{8-12}	-0.049**	-0.134**	0.004	0.002	-0.003	0.005
	R2	0.60%	2.10%	0.70%	0.9%	0.70%	1.90%
R_t^{4-8}	Constant	0.008*	0.007	-0.015**	0.000***	-0.008	-0.009*
	R_t^{0-4}	-0.117**	-0.157**	-0.039	-0.176***	-0.054*	-0.017
	R_{t-1}^{20-24}	-0.071**	-0.073*	-0.035	-0.051*	-0.060*	-0.049*
	R_{t-1}^{16-20}	-0.042**	-0.032*	-0.024	-0.002	-0.056*	0.003
	R_{t-1}^{12-16}	0.005	0.012	0.004	0.047***	0.026	0.059**
	R_{t-1}^{8-12}	0.025*	0.008	0.043**	0.053***	0.021	-0.011
	R_{t-1}^{4-8}	0.004	0.011	-0.039	0.049***	0.028	-0.057**
	R2	1.50%	2.40%	0.90%	2.7%	1.10%	1.10%
R_t^{0-4}	Constant	-0.005	0.002	-0.005	0.000	0.012	0.012*
	R_{t-1}^{20-24}	-0.236**	-0.198**	-0.004	-0.265***	-0.102*	-0.165**
	R_{t-1}^{16-20}	0	-0.004	0.013	-0.069***	0.019	-0.092**
	R_{t-1}^{12-16}	0.006	0.030**	0	-0.017***	0.011	-0.003
	R_{t-1}^{8-12}	0.034**	0.029	0.05	0.002	0.048*	0.034*
	R_{t-1}^{4-8}	0.034*	0.032	0.035**	0.015	0.076*	0.019
	R_{t-1}^{0-4}	-0.024	-0.034	0.016*	0.003	-0.041	-0.053**
	R2	5.40%	4.00%	1.40%	6.8%	1.90%	2.70%

Table 7: Cross-sectional returns on bank holidays.

For each currency pair, this table shows the cross-sectional average returns on regular business days and official national holidays. Returns are calculated over two 4-hour periods that constitute representative working hours for the country pairs listed in the second column. The third (fourth) column indicates whether the day in question is an official national holiday for the foreign (domestic) country. Column 5-7 reports the number of observations or days, the annualised mean returns, and two-tail t -statistics for testing the difference in return means between working days and holidays. The last two columns show the standard deviation for the average return and the results of the F-test for evaluating variance equality.

Currency	Working Time	Foreign Festivity	Domestic Festivity	Nbr Obs	Mean	t-test	StDev	F-test
CHF/USD	Swiss	No holiday	No holiday	3205	7.2%		5.4%	
		Swiss holidays	No holiday	69	-4.6%	0.01	4.1%	0.00
		No holiday	US holidays	102	19.8%	0.03	4.1%	0.00
	US	No holiday	No holiday	3172	-5.2%		6.7%	
		Swiss holidays	No holiday	69	-21.0%	0.05	8.1%	0.00
		No holiday	US holidays	102	-7.5%	0.41	3.8%	0.00
DEM/USD	German	No holiday	No holiday	1492	5.0%		5.0%	
		German holid.	No holiday	69	-4.6%	0.04	3.5%	0.00
		No holiday	US holidays	47	16.5%	0.06	3.5%	0.00
	US	No holiday	No holiday	1492	-5.8%		5.7%	
		German holid.	No holiday	69	-21.1%	0.06	7.7%	0.19
		No holiday	US holidays	47	-4.6%	0.45	3.6%	0.00
EUR/USD	EU	No holiday	No holiday	1677	10.3%		4.6%	
		German holid.	No holiday	36	-3.2%	0.03	3.9%	0.00
		No holiday	US holidays	54	13.9%	0.34	3.9%	0.00
	US	No holiday	No holiday	1677	-2.3%		6.2%	
		German holid.	No holiday	36	-4.7%	0.16	5.6%	0.01
		No holiday	US holidays	54	-1.6%	0.21	3.2%	0.00
GBP/USD	UK	No holiday	No holiday	3281	2.4%		4.1%	
		UK holidays	No holiday	72	1.1%	0.06	1.8%	0.00
		No holiday	US holidays	93	5.7%	0.15	3.6%	0.16
	US	No holiday	No holiday	3281	-3.5%		5.1%	
		UK holidays	No holiday	72	-11.6%	0.03	5.1%	0.93
		No holiday	US holidays	93	6.1%	0.14	3.0%	0.00
JPY/EUR	Japan	No holiday	No holiday	1659	2.8%		4.6%	
		Japan holidays	No holiday	54	-16.3%	0.01	3.9%	0.26
		No holiday	German holid.	38	-0.2%	0.01	4.1%	0.00
	EU	No holiday	No holiday	1659	-8.0%		6.0%	
		Japan holidays	No holiday	54	-13.9%	0.15	5.0%	0.26
		No holiday	German holid.	38	-4.3%	0.33	3.1%	0.00
JPY/USD	Japan	No holiday	No holiday	3070	2.7%		4.8%	
		Japan holidays	No holiday	204	0.2%	0.28	4.5%	0.34
		No holiday	US holidays	100	5.0%	0.39	5.1%	0.00
	US	No holiday	No holiday	3070	-4.0%		5.1%	
		Japan holidays	No holiday	204	-2.3%	0.39	4.1%	0.01
		No holiday	US holidays	100	-0.1%	0.24	4.1%	0.00

Figure 1: Intraday Patterns

For each currency pair, these graphs show 24 cross-sectional averages for annualised returns over four hours. *t*-statistics were used to test (homoscedastic) equality in means. *t*-statistics refer to two-tail statistics with respect to the difference between a given 4-hour return mean and all the other 4-hour returns. Black (grey) bars mean that an average return over a specific 4-hour time period is different at a 1% (5%) significance level. The time of day is expressed in GMT.

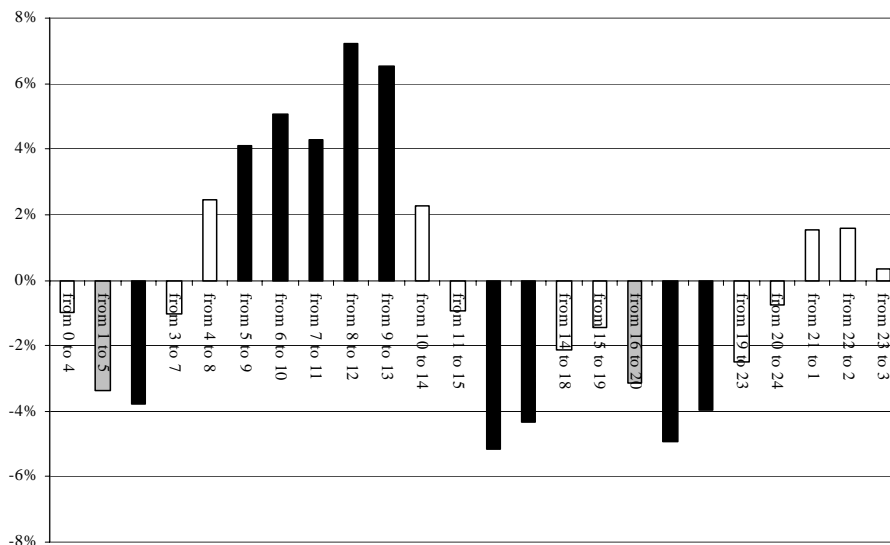


Figure 1A: CHFUSD

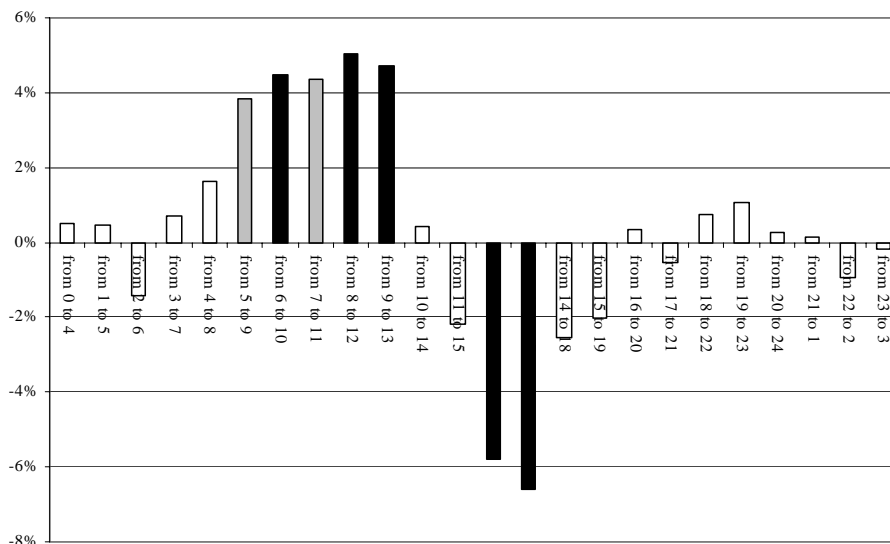


Figure 1B: DEMUSD

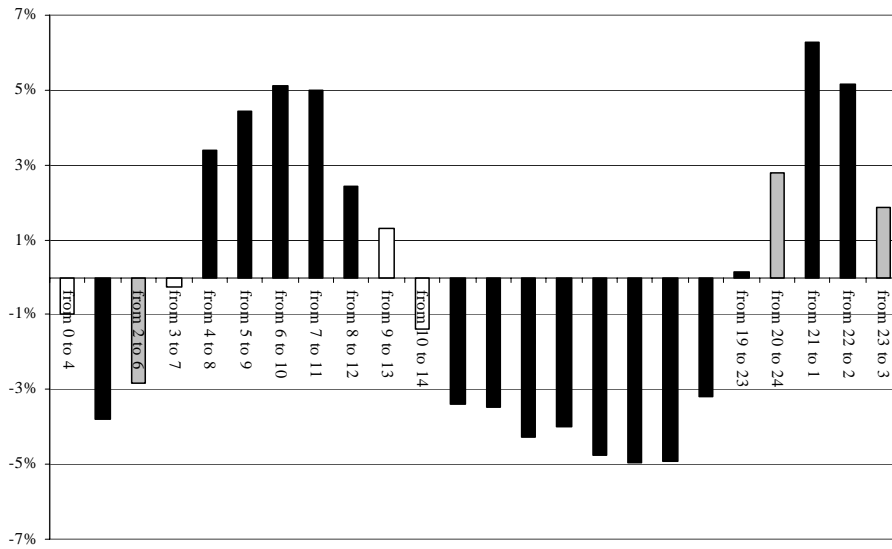


Figure 1: Figure 1D: GBP/USD

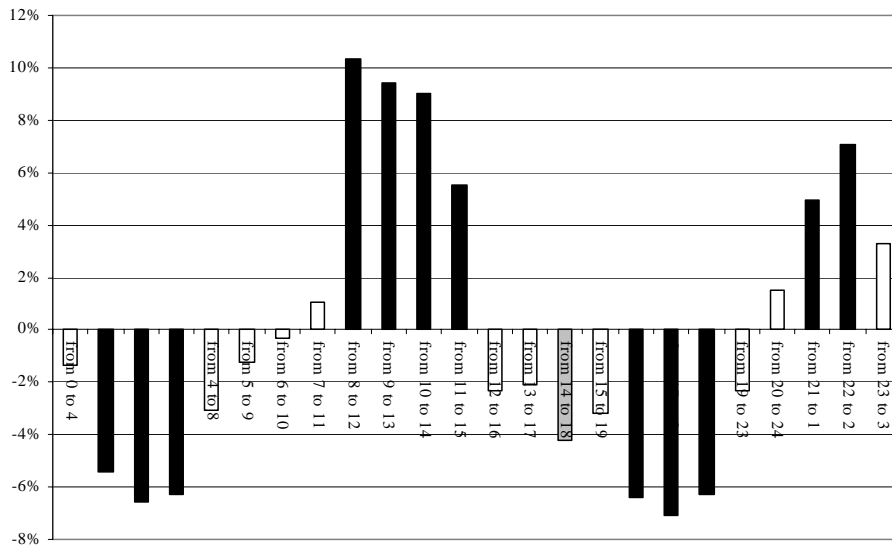


Figure 1C: EURUSD

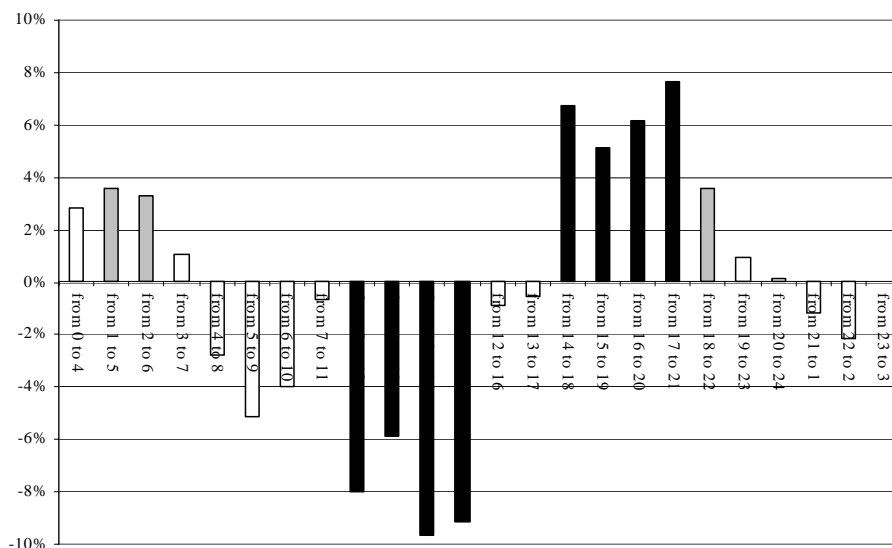


Figure 1E: JPYEUR

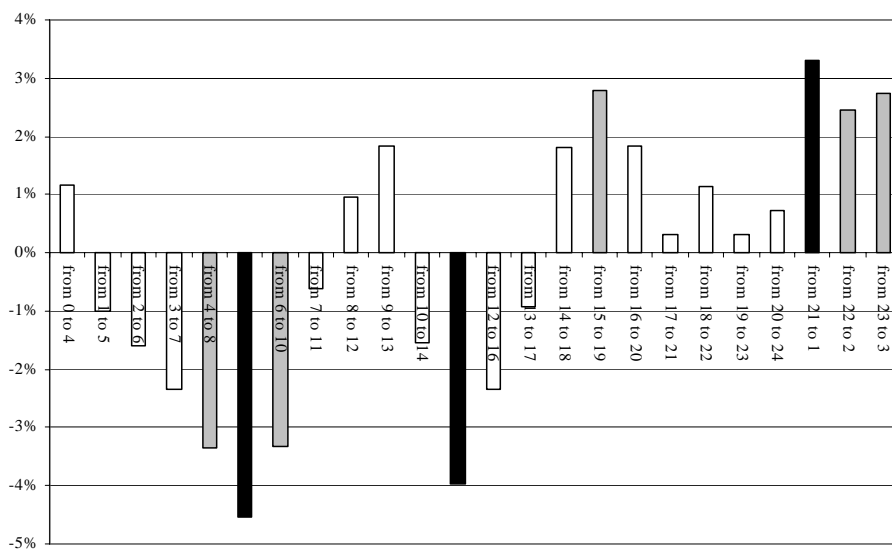


Figure 1F: JPYUSD

Figure 2: Patterns across years

For each currency pair, these figures show the year-by-year cross-sectional return averages (in annual terms) for a representative 4-hour period in domestic and foreign business hours. Figure 2 A refers to the appreciation in the domestic currency during foreign working hours. Figure 2 B refers to the depreciation in the domestic currency during domestic working hours.

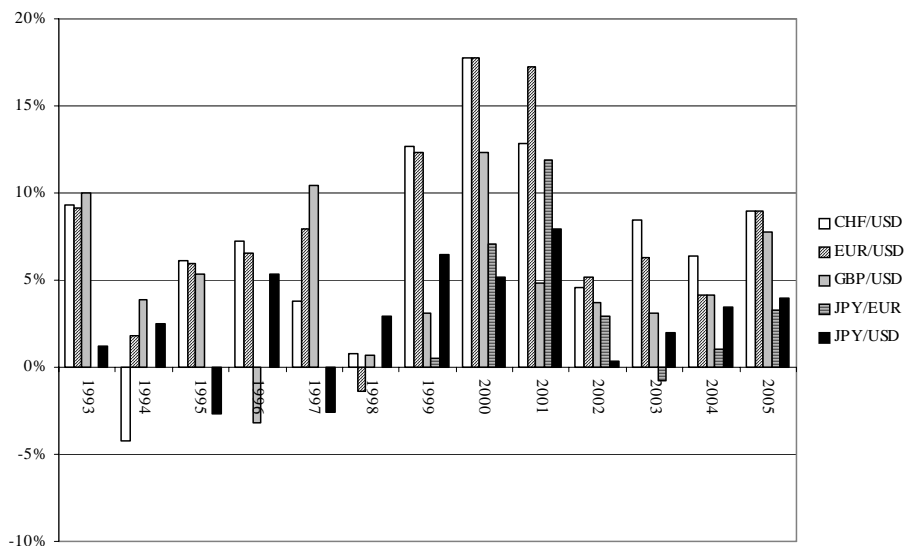


Figure 2A: Domestic currency appreciation during counterpart working time

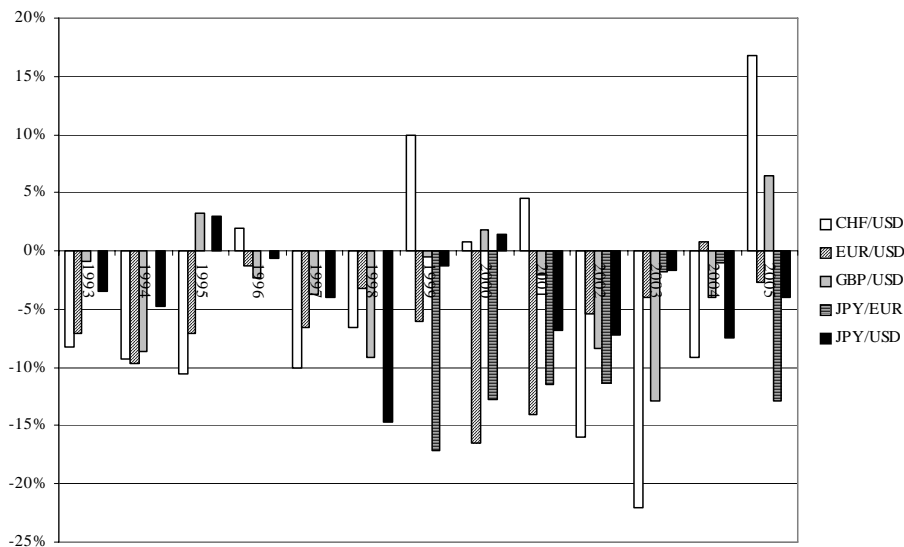


Figure 2B: Domestic currency depreciation during domestic working time